

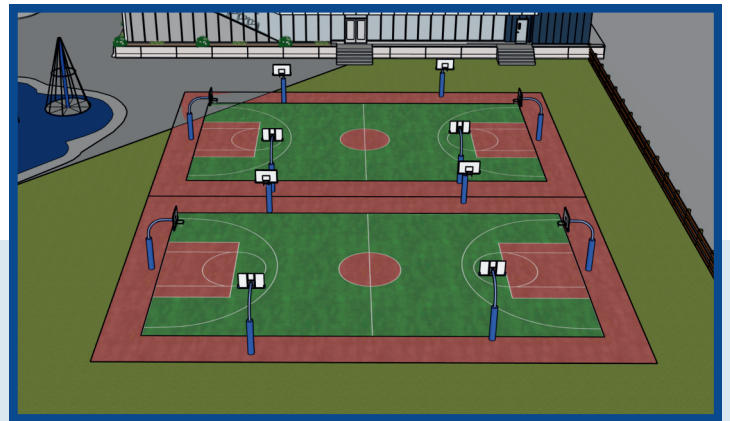
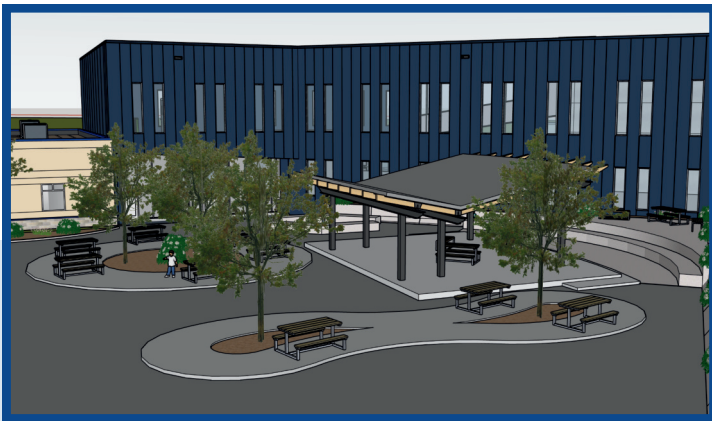
Rooted in Faith, Growing for the Future

*Building a legacy of Christian Education
for the next generation.*

For nearly 30 years, Bearspaw Christian School has been a beacon of Christ-centred learning. We have proudly watched generations of students grow into confident, faith-filled graduates ready to serve and transform the world. Today, our mission is more vital than ever!

“Partnering with the family to realize Christ-like character and academic excellence in each student.” — BCS Mission Statement

To advance this mission, our ELEVATE capital campaign is empowering students by investing in new classrooms, labs, maker spaces, and community areas on our development-ready upper floor and school grounds. With your support, we can open new doors of opportunity for this rising generation and elevate every student to their full potential in Christ!



At BCS, we believe community is essential to who we are and how our students thrive. Guided by our mission and informed by the voices of our students and families, we are developing plans to create welcoming, interactive spaces that will foster connection and belonging for everyone in our community.

We invite you to partner with us!

With your support, we are just steps away from developing 28,000 square feet on our upper floor into new opportunities for our students!

>> [Click here](#) << to see the proposed upper floor development plan.

12 NEW CLASSROOMS

BCS is experiencing exciting growth and our enrollment has tripled to 75 students per grade up to Grade 10. To accommodate this growth through Grade 12, there is a vital need for us to expand our capacity. Therefore, we will be creating 12 new classrooms, a new Science Lab, and vibrant community areas on our upper floor.

STEM INNOVATION HUB

We are excited to prepare students for the future! Our new STEM Lab and Maker Spaces on the upper floor will feature advanced technology and real-world design applications to equip students with the skills that expand their future career opportunities.

Giving Opportunities

- Make a **One-Time Donation**
- Become a **Monthly Donor**
- Donate your **BCS Capital Bond**
- Join us as a **Corporate Sponsor**
- Maximize **Corporate Matching**
- Donate **Shares in Kind**
- Consider **Estate Planning**
- Support our **Fundraising Events**



bearspawschool.com/support-bcs/donate

If you have questions about the ELEVATE Capital Campaign or would like to explore giving opportunities, please contact the BCS Director of Development and Community Relations, at ray.chan@bearspawschool.com.

Proposed 2nd Floor Development Plan

Updated December 2025

Student Commons

Student Commons

Science Lab

STEM Maker Spaces



Development Timeline for **ELEVATE** Capital Campaign



01 FUNDRAISING

Scholarships will help you study abroad without cost and even get support for living expenses, education, and others. Improve your competence according to the scholarship requirements.



03 OUTDOOR DEVELOPMENT

Like student exchange, you can join a student loan to get experience abroad. Always check the official campus website for exact information.



05 UPPER FLOOR DEVELOPMENT

Do you often participate in volunteer programs and volunteer there? If so, then you can join a volunteer program to study abroad. In this program, you will usually be sent to various countries to carry out social activities. The social activities include teaching elementary school children, conducting different counseling, and conducting simple research.

02

PRELIMINARY PLANNING



In addition to scholarships, you can go abroad by participating in student exchanges. Many inter-campus or inter-state programs for several months

04

UPPER FLOOR PERMITS



Even though you won't get any degree, there is a certificate that you will get, and it will most likely be very useful when you apply for a scholarship. So, it never hurts to join this program because you will get an unforgettable experience.

06

GRAND OPENING



Not haphazardly, your research must be perfect so that it can be taken into consideration by scholarship givers. Also, remember that the research must be in English and legalized by the university where you study.

